

Electronic Supplementary Information

Electric Field Enhancement and Concomitant Raman Spectral Effects at the Edges of a Nanometer-Thin Gold Mesotriangle

P. R. Sajanlal,^a C. Subramaniam,^a P. Sasanpour,^b B. Rashidian,^{b,c} and T. Pradeep^{a*}

^a*DST Unit on Nanoscience (DST UNS), Department of Chemistry and Sophisticated Analytical Instrument Facility, Indian Institute of Technology Madras, Chennai – 600 036, India*

^b*Institute for Nano Science and Technology (INST), Sharif University of Technology, Tehran, Iran*

^c*Department of Electrical and Electronic Engineering, Sharif University of Technology, Tehran, Iran*

*Address correspondence to pradeep@iitm.ac.in

Fax: + 91-44 2257-0545

Electronic supplementary information 1

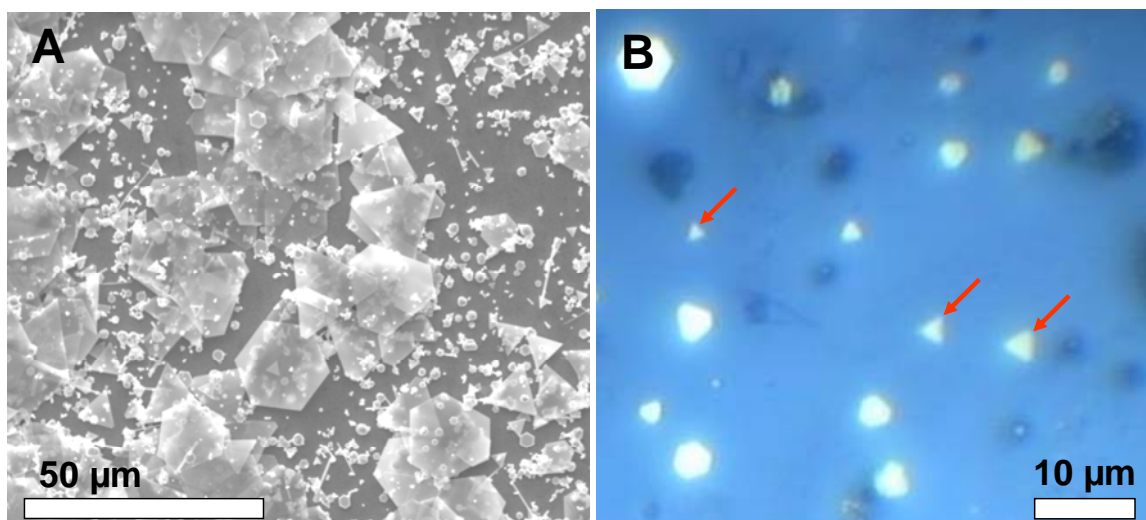


Fig. S1. (A) Large area SEM image of mesoplates. (B) Optical image of mesoplates. Triangles are seen clearly (marked).

Electronic supplementary information 2

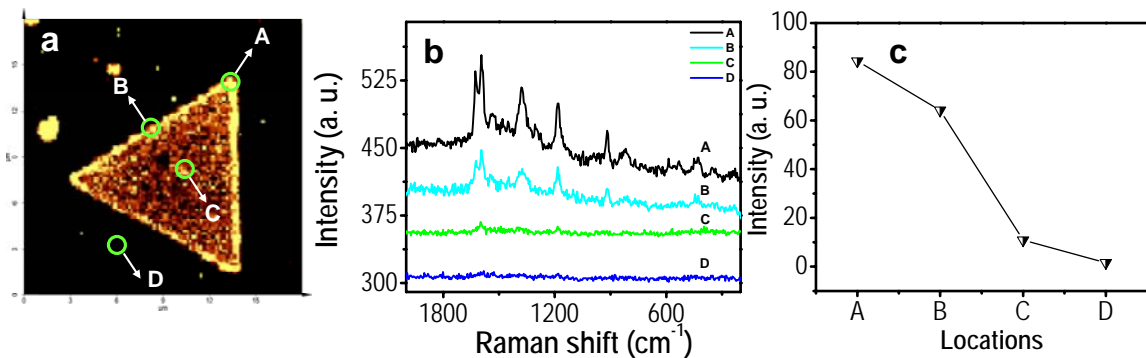


Fig. S2. (a) Raman image of the nanometer-thin mesotriangle generated by integrating the intensities in the range of 1100-1700 cm⁻¹, (b) Raman spectra collected from different points marked in 'a', and (c) A plot showing variation in the Raman intensities of the peak centered at 1595 cm⁻¹ at different locations marked in 'a'.